



Turner Bianca

Case Study

About

Turner Bianca PLC is a world leader in home textiles, supplying major retailers in the UK and across the globe including brands such as Cath Kidston, Jigsaw and Catherine Lansfield. Experienced, focused, efficient and dependable at all stages of the supply chain, the company offers a wealth of expertise in every aspect of the home textile industry.

The Brief

With the growth of the business, Turner Bianca extended the workspace at their warehouse facility in Dukinfield, Greater Manchester from four warehouse units to eight. As a trusted partner Sudlows supported the customer IT and Facilities teams to develop a major upgrade to the company's WiFi network in the new space.

TURNER BIANCA



The Project

Sudlows installed a number of new communications cabinets along with fibre and copper connectivity to the Cisco WiFi access points which were also supplied and installed by Sudlows' engineers.

The relationship between Turner Bianca and Sudlows has developed over a number of years and Sudlows were approached again when the company needed to convert warehouse space into a modern design studio.

With the growth of the business, Turner Bianca extended the workspace at their warehouse facility in Dukinfield, Greater Manchester from four warehouse units to eight. As a trusted partner Sudlows supported the customer IT and Facilities teams to develop a major upgrade to the company's WiFi network in the new space.

Sudlows were awarded the contract to install a raised floor and supporting building works throughout the new office space along with CAT6A copper and OM4 fibre for the converted warehouse space.

Location:
Manchester

Duration:
2 Months

Size:
Comms Cabs,
CAT6A, WAPs

Testimonial

Sue Leeson, Systems Manager for Turner Bianca, said:

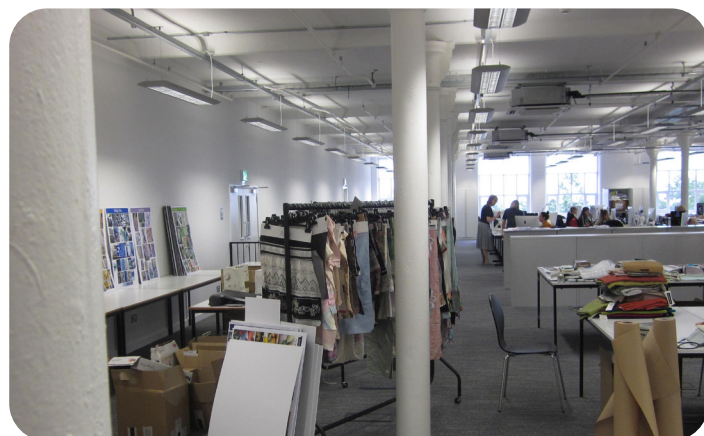
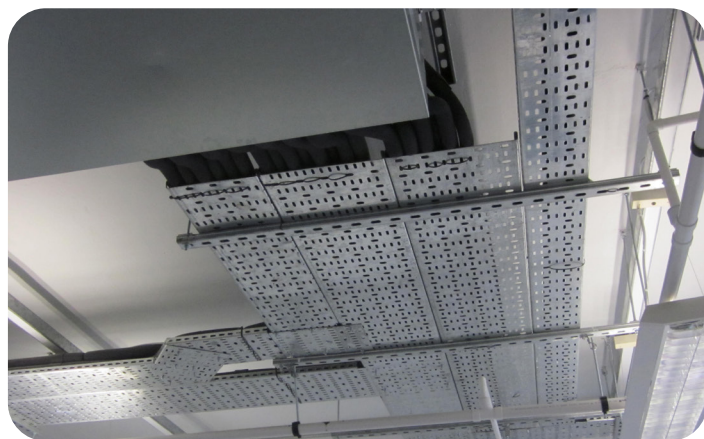
"The work carried out by Sudlows has modernised our warehouse space and improved our ways of working which has enabled us to reduce lead times and improve efficiency at almost every stage in the supply chain process.

"Sudlows impressed us with their knowledge and professionalism which led to us awarding them a further contract for our Bell Mill design studio."

Conclusion

With the growth of the business, it was vital that Turner Bianca had a modern, reliable and efficient infrastructure to provide a high quality service to its customers.

Sudlows were able to deliver this within budget and the allotted timeframe while been in a position to further support the company's continuing expansion.



CRITICAL INFRASTRUCTURES



ENTERPRISE SERVICES



FIBRE SPECIALISTS



ELECTRICAL SERVICES



BUILDING SERVICES



FACILITIES MANAGEMENT