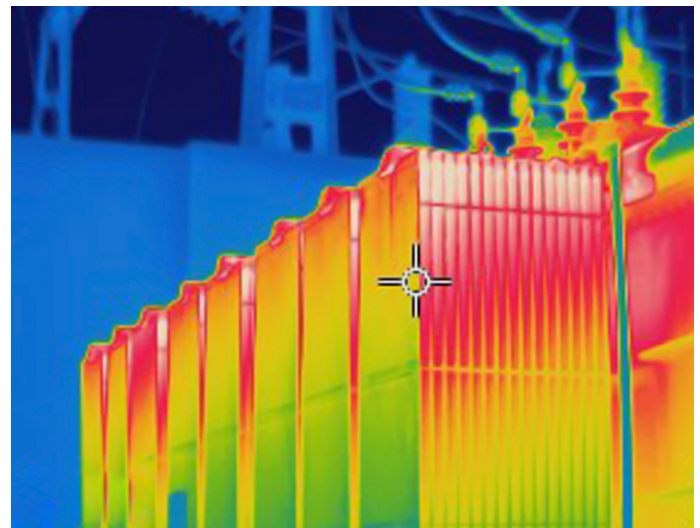


Thermal Imaging







Electrical systems and equipment are subject to possible deterioration once energised and commissioned. The deterioration and loading of electrical equipment is not always apparent or detected by routine monitoring and maintenance or periodic inspection and testing.

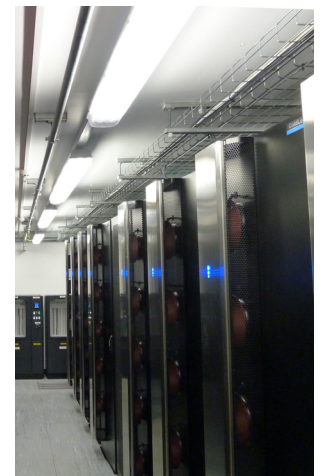
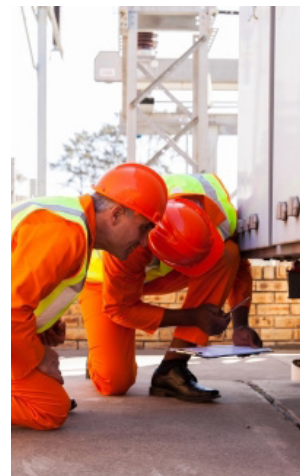
The main forms of deterioration are loose or corroded connections and joints, insulation resistance breakdown or worn and damaged parts. If these faults are left undiscovered and uncorrected they can cause equipment failure and in extreme cases can result in a fire or possible explosion.

These faults result in high resistance which in turn causes a rise in temperature. This rise in temperature can easily be detected by using thermal imaging.



Benefits of Thermal Imaging

-  Thermal Imaging is a non-invasive and non-destructive survey which can be completed whilst the equipment is running and on load
-  Increased safety
-  Increase equipment life span
-  Reduction of costs for breakdowns
-  Risk Management reduction
-  Reduction of insurance premium



CRITICAL INFRASTRUCTURES



ENTERPRISE SERVICES



FIBRE SPECIALISTS



ELECTRICAL SERVICES



BUILDING SERVICES



FACILITIES MANAGEMENT